



# DEEPWATER

## PROGRESS ASSOCIATION NEWSLETTER

Circulation 310 E:eventsdeepwater@gmail.com Edition number 408 July 2025

We acknowledge the elders (past, present and future) of the Ngoorabul people.

### Our Weekly Library – how fortunate are we to have it. It was officially opened on 2 November 1962 by the President of the Severn Council.

Every Wednesday, from 10 am at the School of Arts Hall you can drop in and see Miranda and borrow a book or DVD, an audio e-book. You can join the Digital Library with your Library card number and DOB – just ask Miranda about this. The Library offers a printing service, a computer to use, has graphic novels for young people.

Between 1pm and 1.30 there is a home delivery service.

On 14<sup>th</sup> May just gone, the council have had Starlink installed for the library. Wi fi password required.

You can join a book club; the scrabble club, get tech (phone and computer) senior help, come and do mindful colouring in for adults or just come for a social morning tea.

#### 1<sup>st</sup> Wednesday of the month .

Social Morning Tea 10.30 to 11.30

#### 2<sup>nd</sup> Wednesday of the month.

Book Club 10.30 to 11.30

#### 3<sup>rd</sup> Wednesday of the month.

Scrabble

#### 4<sup>th</sup> Wednesday of the month.

Colouring for Adults 10.30 to 11.30 on

#### alternate weeks

Tech Savvy Seniors 10 am to 12.30

bookings required 67302600



Once you are a member of the Library you can use all the facilities of the Glen Innes Library as well. Miranda can bring out novels, magazines etc from the Glen Innes Library for us out here .

## Carl Wilhelm Baer

c. 1890-1962

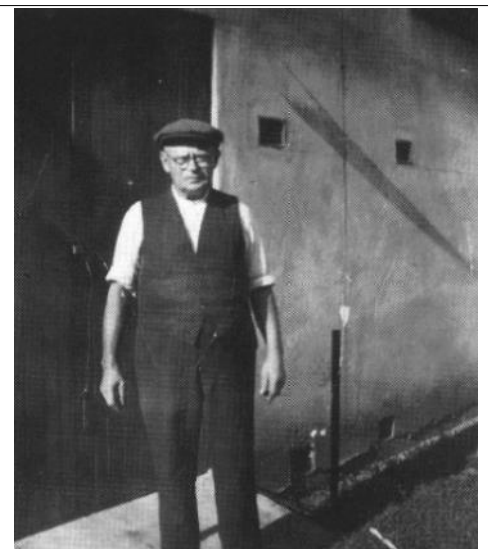
A German immigrant baker who walked from Sydney to Glen Innes, became an Australian citizen in 1922 and was to eventually run six very successful business enterprises in Deepwater. In 1912 Carl Wilhelm Baer, a baker aged twenty-three, who could speak no English, jumped ship after it landed in Sydney and after arriving in Glen Innes on foot, he saw the name “Hartmann and Little” on Mr. August Hartmann’s bakery. As Hartmann was also a German name, he, successfully, made inquiries about a job – which even came with the offer of accommodation at the rear of the bakery. It was to be the first work he had in Australia and the beginning of a long friendship.

From the time he joined the Glen Innes

bakery Carl was treated as one of Hartmann family and “there were many exchanges of visits between the families, by horse and sulky in the early days, and later by car. Carl had a motor bike at one time as well.”

He was to help Mr. Arnie Hartmann (Son of August) later in many ways with finances. “When I wanted to put some cattle on down at the Glen Elgin property, as we found it was not suited for sheep there and went out of them, Carl lent me money to buy the cattle. He had turned out to be an astute businessman in Deepwater where he set up businesses not already there and everything he touched showed some profit.

When August Hartmann moved to the “Riverdene” property at Dundee (and also ran the Post Office) ... “He started Carl off in the bakery business in a little,



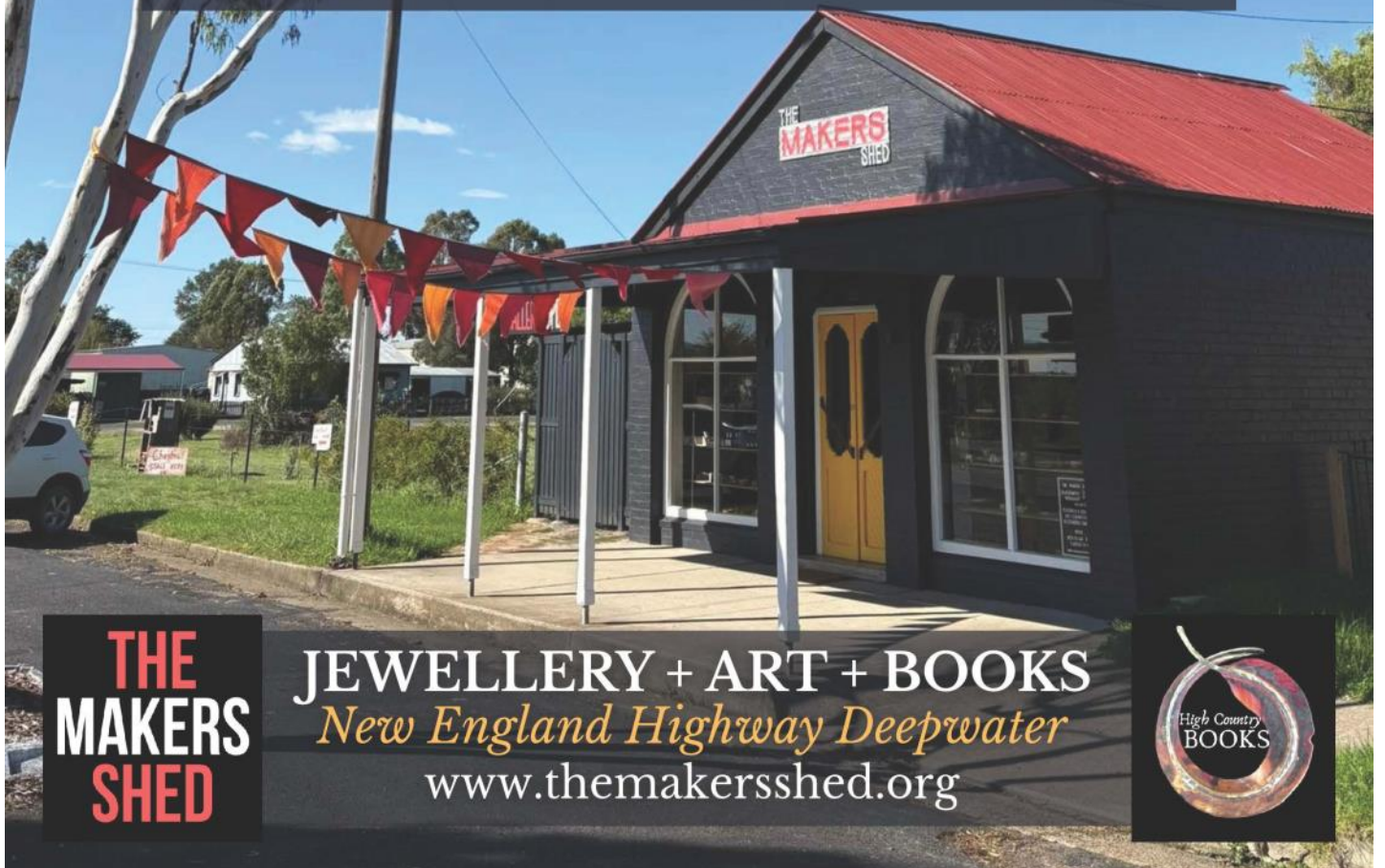
Carl Wilhelm Baer

old, premises in Deepwater on the western side of the highway, near a former cricket pitch. The Glen Innes bakery was bought by Charlie Hunt senior, and this building now houses Thoms Retravisoin.”

*Continued page 4*

# Winter at The Shed

*an afternoon of art & words*  
Saturday July 19, 2-4pm  
*Peter Champion art exhibition*  
*Diving Into Deep Water book launch by*  
*Kristy Reading of ABC New England*  
Come for a **free drink & nibble**  
*10% of sales donated to Westpac Rescue Helicopter*



**THE  
MAKERS  
SHED**

**JEWELLERY + ART + BOOKS**  
*New England Highway Deepwater*  
[www.themakersshed.org](http://www.themakersshed.org)



# FOODWORKS

DEEPWATER

Serving the local community since 1948

Save! Save! Save! By shopping locally!

Trading hours:

Monday to Friday 7:00am - 6:30pm

Saturday 7:00am - 6:00pm

Sunday 9:00am - 4:00pm

Public Holidays 9:00am - 1:00pm

Closed Good Friday and Christmas day

Free home delivery within Deepwater Village!

**DID YOU KNOW?**

Spend \$50 or more in a single transaction and you receive a 3% instant rewards discount!

*(Offer does not include items already reduced/on special, and other selected items)*

Ph 67345202 or email [nadini@bigpond.com](mailto:nadini@bigpond.com)  
Deliveries outside Deepwater by arrangement.

## DEEPWATER ANTIQUES AND COLLECTABLES

CHRIS ESTREICH

OWNER AND OPERATOR OF THE DEEPWATER ANTIQUES AND COLLECTABLES

LOCATED AT 55 TENTERFIELD ST DEEPWATER N.S.W

ESTABLISHED IN 2013

SPECIALIZING IN ANTIQUES, OLD WARES, COLLECTABLES AND VINYL LP RECORDS

## DEEPWATER ANTIQUES AND COLLECTABLES

### WANTED TO BUY

- OLD BOTTLES, GLASS & STONWARE
- OLD TOOLS, AXES, CHISELS ETC.
- OIL BOTTLES, TOPS, TINS & SIGNS
- OLD TOYS INC WIND UP & CEREAL
- LP RECORD COLLECTIONS
- MILITARY-BADGES, LIGHTHOUSE ETC.
- CHINA, POTTERY & GLASSWARE
- OLD COMIC BOOKS.
- ANYTHING OLD OR INTERESTING



POP IN AND SEE CHRIS, OR GIVE ME A CALL ON 0408743348

E-MAIL [chrisecho54@bigpond.com](mailto:chrisecho54@bigpond.com) 55 TENTERFIELD STREET DEEPWATER, N.S.W 2371

**From page 1**

Once Carl had established himself in Deepwater, he brought Miss Martha Loeffler, whom he had known in his youth, out of Germany and “they were married on 29<sup>th</sup> July 1962 in Adelaide by the ship’s Captain which had brought her to Australia.”

It had been a big decision for her to decide to make the trip to Australia, and she settled down in Australia to become a very keen businesswoman, both in Bonalbo and Deepwater. “Together they were in Bonalbo in partnership with another German, running a bakery. Eventually the climate was too uncomfortable for Carl, and they sold their share to their partner. Carl had spent

some time in Deepwater before and decided to return there as he found the climate more suitable (cold nights, hot dry summers)”.

His second bakery was on the side of the Eclipse picture theatre. “There he had a big bread-making cylinder, and the ovens were wood fuelled. He would never have the front of the fuel stove open as it caused too much draught and thus took too much wood. He had learned frugality the hard way as his family had had seventy acres of land in Germany and spoke of the waste he saw in Australia. In Germany they grew so many acres of maize and none was wasted; they took grain and then the stalks. Seven children were raised on those seventy acres. He

bought no land in Australia, though he had once been tempted by a block north of Deepwater.”

Carl was a good baker who could make all kinds of bread, small pastries etc... Dal Hartmann was apprenticed in 1949, and Vince Elliott was employed there about the same time. The cakes and pastries were hand made on a big wooden bench. Mr. Arnie Hartmann once had a whole night there fixing up an oval brick oven, as some of the bricks on the inside had been falling down, and Carl got him up from Glen Elgin to repair it.

Bread was brought in bulk to Dundee by Percy Richardson, in the early stages by sulky and later by motor. It was packed individually in brown paper at the Dundee Post Office. In Deepwater of course it was normal in those days for people to walk much farther than they do today and they collected their bread. Deliveries were made to Torrington and Stannum, with Tenterfield people receiving theirs by train.

“One horse he could not catch, so he fed it in a cask. A long rope was looped round the cask, and the end of it went into a shed where he hid. When the horse put its head into the cask, he pulled the rope taut. That horse was needed to pull the bread cart!”

The Eclipse Café was in front of the bakery and a girl was employed to help run this. The bakery and café prospered, and eventually Carl was able to let others do the baking while he turned his energies and innovative mind to other enterprises.

**To be continued next month**

Original story by Eve Chappell  
Photos by Alice Rockwell

Article printed with permission from  
LAND OF THE BEARDIES MUSEUM

Corner of West Avenue and  
Ferguson street  
Glen Inness  
Open daily 10am — 2pm



## Notices

The Deepwater School of Arts Hall committee are delighted to see the Hall being used by the Community. However due to the requirements of Crown Lands (the hall is on Crown Land) – all bookings need to be recorded.

The Hall can be booked through Foodworks.

Enquiries can be made through the hall chairperson, Mary Hollingworth. [tinkernanny@outlook.com](mailto:tinkernanny@outlook.com)

### Work Wanted

#### House Cleaning

Reasonable rates

Contact Joy on

0428 058 253

### Work WanteThe

#### Massage

Sore and aching muscles?

Remedial & Relaxation

Contact Joy on

0428 058 253

## Mothers Group

**Come join our Tiny Tots Group!**

**Who? Mums with little ones**

**Where? Deepwater Anglican Church, Forbes St**

**When? Weekly each Monday**

**Time? 1pm-3pm**

**What do I bring? Just you and your little ones!**

**Refreshments? Lunch/tea/coffee will be provided**

**We look forward to seeing you there!**



For further info...

Trudy – 0428 266 417

Penny – 0408 728 149

Business card size \$60 for the year

One off of that size \$8 issue

Full page one off \$35 per issue

Other sizes negotiable

Send your business card or designs to

[eventsdeepwater@gmail.com](mailto:eventsdeepwater@gmail.com)

Payable at Deepwater Post Office

## Sudoku

7			8	4		2		5
	3		1	5		4		
		5		6			7	
	9			3	4	5	8	
	2	8	7			9		3
5		3	9			6		
		4	5	2			9	
		9	4		8			
8					1	7		

Pre internet chat room using  
An old version of windows...



### Deepwater Newsletter advertising & correspondence

[eventsdeepwater@gmail.com](mailto:eventsdeepwater@gmail.com)

### Progress Association

Facebook: Deepwater Progress Association Inc

[deepwaterprogressassociation@gmail.com](mailto:deepwaterprogressassociation@gmail.com)

### Deepwater Railway Station

Facebook: Deepwater Railway Station

Welcome to Deepwater web page [www.DeepwaterNSW.com](http://www.DeepwaterNSW.com)

The Deepwater Newsletter is Part of the Deepwater Progress Association inc.

All articles published in the **Deepwater Newsletter** are published in good faith and the Deepwater Newsletter bears no responsibility in the accuracy of the information contained in such articles.

Any person or persons publishing material in the **Deepwater Newsletter** do so in the knowledge that they shall personally accept any responsibility for the accuracy and other correctness of such articles.

**Printed by:** Deepwater Public School

**Distribution by:** Deepwater Post office

**Deepwater Progress Association Committee Members**

**President:** Willem Van der Heul

**Vice President:** Charles Kilby

**Secretary:** Tricia Stack

**Treasurer:** Jannette Daly



# WHAT'S ON THIS MONTH



## Church Services:

**Anglican Church Service** (Forbes Street Deepwater & Moore Street Emmaville)

The Church services alternate weekly between Deepwater and Emmaville if a Month has five Sundays the 5th Sunday will be in Torrington

Sunday July	6	Deepwater	9 am
Sunday July	13	Emmaville	9 am
Sunday July	20	Deepwater	9 am
Sunday July	27	Emmaville	9 am
Sunday August	3	Deepwater	9 am
Sunday August	10	Emmaville	9 am



**Church Wardens Deepwater** - Reuben Cooper 0499 868 321      **Emmaville** - Heather Reynolds 0428 347 252

**Catholic Church Service** (Simpson Street)

Sunday at 10 am

**Church in the Shed** (Deepwater School Of Arts Hall Tenterfield Street)

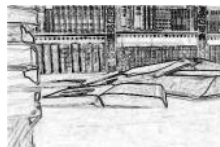
Sundays at 10 am

## Deepwater Rubbish Tip Hours:

Thursday 10:00 am – 2:00 pm      Saturday: 1:00 pm -3pm      Sunday: 10am -12 noon

## Library Service:

Wednesday 10 am - 12 pm and 1.30 pm - 4 pm



## Preschool:

at the CWA Hall

Tuesday 9.00am – 3.00pm

Thursday 9.00am – 3.00pm



## Progress Association AGM & Meeting

Wednesday 13th August 5:15 pm at the School of Arts Hall

*(Code Of Conduct Rules will be followed)*

Everyone welcome.

## Sewing Group

Meets Monday's at the School of Arts Hall

9am to 4pm - leave when you want to.



## Tiny Tots Group

For Mums with little ones

Mondays 1pm—3 pm At the Anglican Church Deepwater

Refreshments provided.

Contact Trudy 0428 266 417 or Penny 0408 728 149

7	6	1	8	4	9	2	3	5
9	3	2	1	5	7	4	6	8
4	8	5	2	6	3	1	7	9
1	9	7	6	3	4	5	8	2
6	2	8	7	1	5	9	4	3
5	4	3	9	8	2	6	1	7
3	7	4	5	2	6	8	9	1
2	1	9	4	7	8	3	5	6
8	5	6	3	9	1	7	2	4

Sudoku answer

For notices to be included, please send details to [eventsdeepwater@gmail.com](mailto:eventsdeepwater@gmail.com)

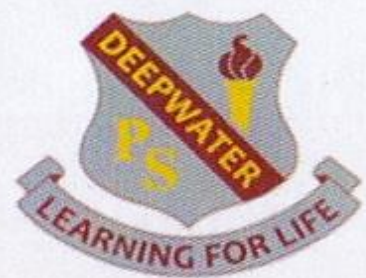
**Cut OFF date for the next Newsletter is 20 August.**

# WOOD RAFFLE



Over the next three months, the Deepwater P&C is running wood raffles and a winner will be drawn in the first week of each month. The proceeds assist families with the cost for the children's trip to Lake Ainsworth Camp later this year.

1 Ticket for \$2  
or  
3 Tickets for \$5



Tickets available at  
Deepwater Post Office & Foodworks



**0426 977 997**

Servicing Glen Innes, Deepwater,  
Tenterfield, Inverell and  
all surrounding towns.

Logbook and General Service

Repairs

Breakdowns

Bikes

Farm Equipment

Trailers and Much More

ABN:16 620 386 106

License No: MVRL62558



**JEREMY PHIPPS**  
 ABN - 52 483 386 874  
 LIC - 292263C

jeremy@keservices.com.au  
 0423742312  
 www.keservices.com.au  
 4779 New England HWY,  
 Deepwater, NSW, 2371

**KURRAJONG ELECTRICAL SERVICES**

*"Your local electrician servicing Tenterfield,  
 Deepwater, Glen Innes and all surrounding districts"*

**ECHO'S ANTIQUES DEEPWATER**  
 Antiques, Collectables and Old Wares

**CHRIS ESTREICH**  
 Buying Old Bottles

55 Tenterfield Street  
 Deepwater NSW 2371

0408 743 348  
 chrisecho54@bigpond.com

Bookings;  
[AirBnB.com.au](http://AirBnB.com.au)

[www.deepwaterbankbnb.com.au](http://www.deepwaterbankbnb.com.au)

Butchering and knife sharpening service available in Deepwater

By qualified butcher

Call or message Ken 0404181193

**HUNTER & CO ELECTRICAL**

**Maxwell Hunter**  
 Licenced Electrician

0405 202 666  
 hunterandcoelectrical@outlook.com

ELECTRICAL  
 DATA  
 AIR CONDITIONING

DOMESTIC . COMMERCIAL . INDUSTRIAL

Efficient and Accurate

**Bookkeeping Services**

INSCOPE BOOKKEEPING SERVICES

Contact us today for a FREE 30 Minute Initial Consultation!

CPA AUSTRALIA 0437 165 169  
 yvette@inscopebookkeeping.com.au

**GLENRAC INC**  
 THE GLEN INNES NATURAL RESOURCES ADVISORY COMMITTEE

(02) 6732 3443  
 glenrac@glenrac.org.au  
 www.glenrac.org.au

Business card size \$60 for the year  
 One off of that size \$8 issue  
 Full page one off \$35 per issue

Other sizes negotiable  
 Send your business card or designs to  
[eventsdeepwater@gmail.com](mailto:eventsdeepwater@gmail.com)  
 Payable at Deepwater Post Office